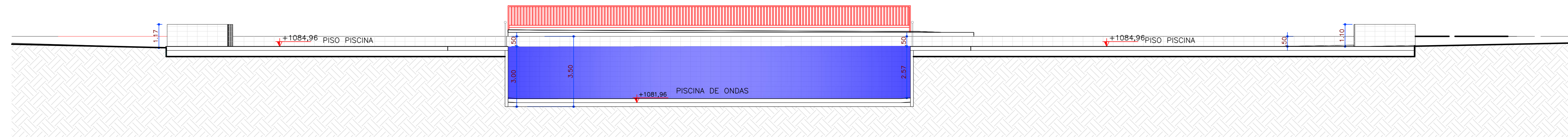
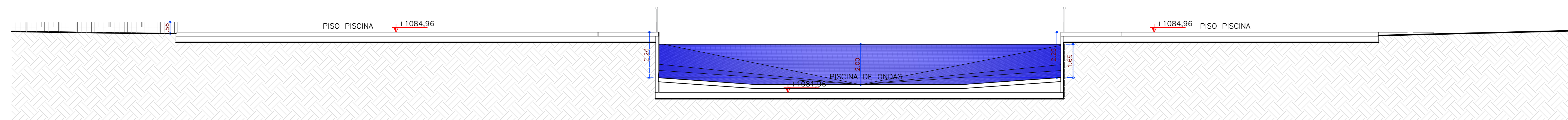


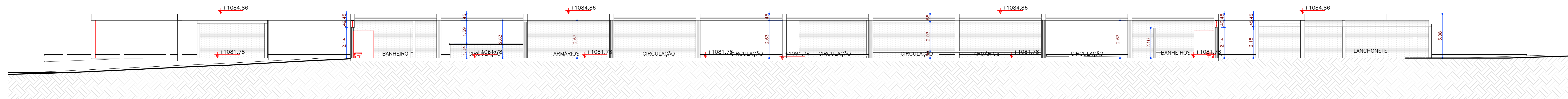
CORTE A - A
escala 1:100



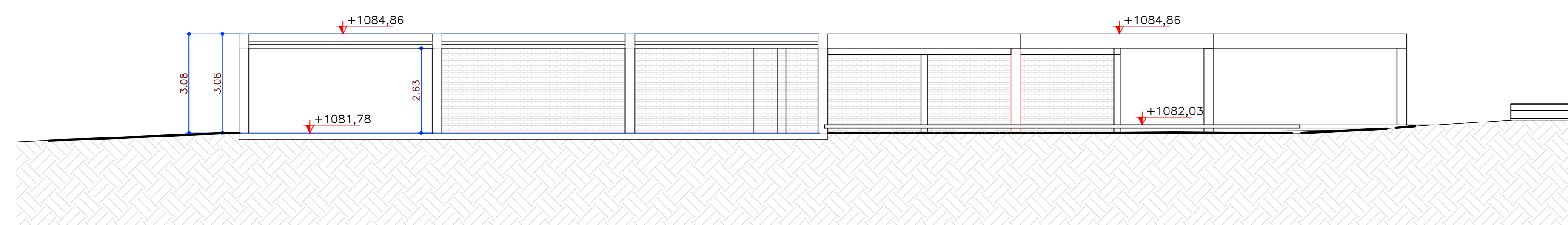
CORTE B - B
escala 1:100



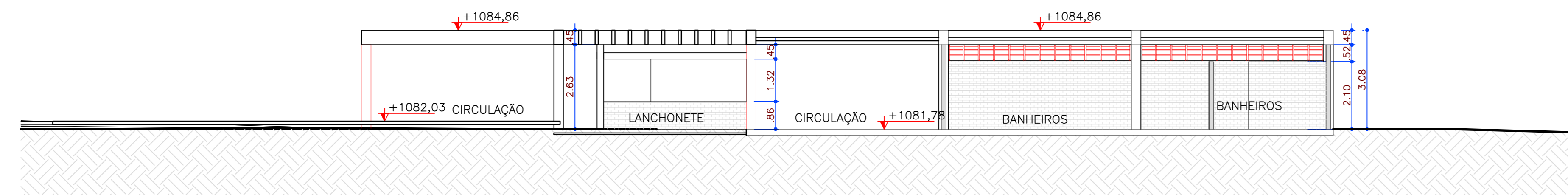
CORTE C - C
escala 1:100



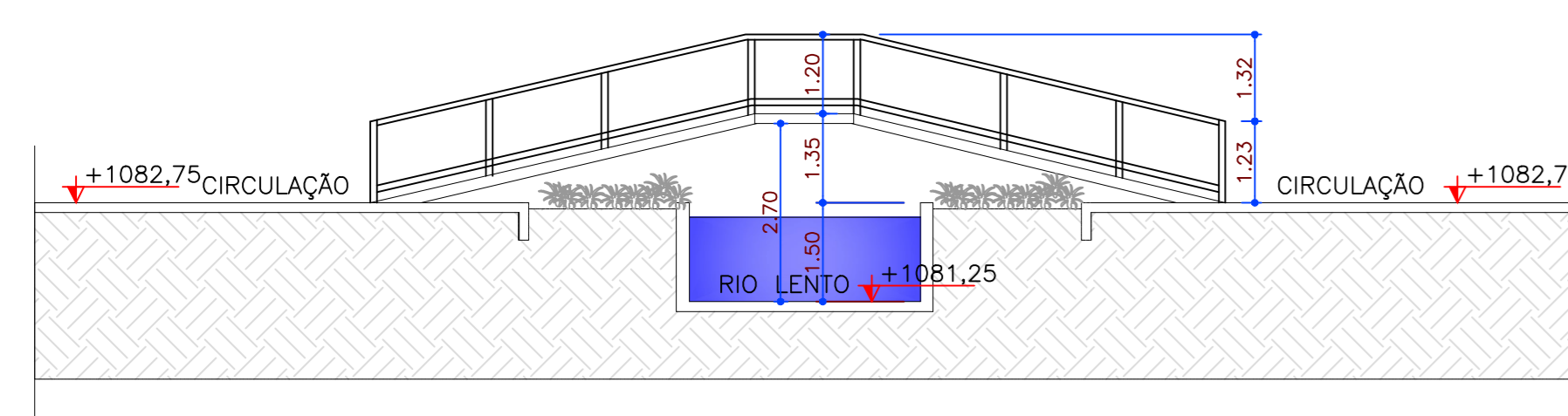
CORTE D - D
escala 1:100



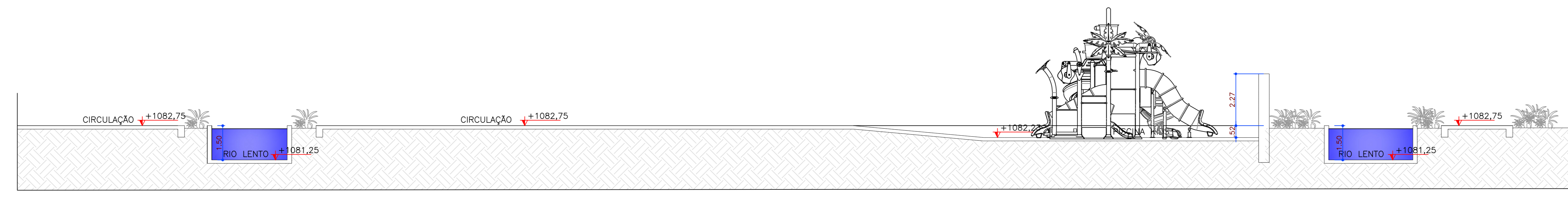
CORTE E - E
escala 1:100



CORTE F - F
escala 1:100



CORTE G - G
escala 1:100



CORTE H - H
escala 1:100

Nº	DATA	EMISSÃO INICIAL	DESCRIÇÃO
00	17/12/2021		

QUADRO DE REVISÕES


Conref
 Engenharia de Piscinas
 Tels. 11 2646.7558 / 2646.6207
 Rua Guilherme Rudge, 129 - Pinha
 São Paulo - SP - CEP 01668-010
 comercial@conrefpiscinas.com.br
 www.conrefpiscinas.com.br

CLIENTE:		SECRETARIA DE ESPORTE E LAZER DO DISTRITO FEDERAL	
OBRA:		PARQUE SARAH KUBITSCHKE - BRASILIA DF	
TÍTULO:	PROJETO ARQUITETÔNICO	FOLHA:	011
CORTES			
ESCALA:	DATA:	REVISÃO:	DESENHO:
1:100	17/12/2021	00	ANTONIO C.
AUTOR DO PROJETO:		ASSINATURA:	
ENGº ANTONIO CARLOS IGNACIO CREA/SP: 060173817-2			